



SOCAL 300 SAILING INSTRUCTIONS

Santa Barbara Yacht Club & San Diego Yacht Club
June 1-3, 2017

1. RULES

- 1.1. All boats in the SoCal 300 Race will be governed by the *rules* as described in *The Racing Rules of Sailing* ("RRS"),
- 1.2. For Monohulls: US Safety Equipment Regulations, (USSER), Coastal Level, as modified by the Notice of Race (NCORC), will be in effect. For reference please refer to the website www.norcalorc.org.
- 1.3. For Multihulls: The Ocean Racing Catamaran Association ("ORCA") Racing Requirements, Sections 6, 7 and 8, will apply, as modified in Addendum #2 of the Notice of Race.
- 1.4. For boats competing under the Offshore Racing Rules, ORR rules will apply, unless otherwise modified.
- 1.5. Boats are required to monitor VHF Ch. 16 for the duration of the race.

2. AMENDMENTS TO THE RULES

- 2.1. RRS Part 2, When Vessels Meet, is replaced between the hours of local sunset and local sunrise by "Part B--Steering and Sailing Rules," of the International Regulations for Preventing Collisions at Sea ("IRPCAS").
- 2.2. RRS 50.2 Spinnaker Poles; Whisker Poles and RRS 50.3 Use of Outriggers are modified to allow the use of fixed and retractable spinnaker poles and bowsprits for the purpose of setting asymmetrical spinnakers.
- 2.3. RRS 51, Movable Ballast is modified to allow the movement of sails that are not set.
- 2.4. RRS 51, Movable Ballast, and RRS 52 Manual Power are modified to allow the positioning of movable ballast by power on boats as designed and as rated by the rating authority. All movable ballast systems shall be capable of manual operation if powered systems are inoperable.
- 2.5. RRS 55 is modified to allow the disposal of biodegradable material used to band spinnakers in the water.
- 2.6. RRS 62 Redress: RRS 62.1 is modified by adding the following: "(e) being directed by a government authority to deviate from her proper course."
- 2.7. US Sailing prescriptions to RRS 63.2 and 63.4 do not apply.
- 2.8. RRS 64.1, Penalties and Exoneration, is modified by adding: (d) When the protest committee decides a boat that is a party to a protest hearing has broken a rule, it may assign a time penalty to be added to the boat's corrected time."

3. NOTICES TO COMPETITORS

- 3.1. Notices to competitors will be posted on the official notice board online (www.offshoreraceweek.com).
- 3.2. Changes to the sailing instructions:
Any change to the SI made prior to 1800, May 31, 2017 will be posted to the official notice board online. Any change to the SI made after 1800, May 31, 2017 will be announced at the skipper meeting and then posted to the official notice board online.





SOCAL 300 SAILING INSTRUCTIONS

June 1-3, 2017

4. POSITION TRANSPONDER –

- 4.1. All boats are required to carry an active position transponder as supplied by the OA. There are no fees associated with this requirement; however boats are responsible for returning the tracker in working order. Broken or lost transponders may be subject to replacement/damage charge of up to \$1000. Transponders will be available Wednesday, May 31, 1600 – 2000 and Thursday, June 1, 0800 - 900 @ Santa Barbara Yacht Club. Boats competing in all of California Offshore Race Week will use their existing trackers from the previous races.
- 4.2 After the race, transponders should be dropped off at the SDYC Sailing Office or Front Desk between 0900 and 1700, or SDYC Security Gate prior to Sunday, June 4, 2017. If for any reason you are unable to complete the race and return to a port other than San Diego, please call 619-758-6310 and let the Sailing Office know what arrangements you will make to return the tracker.

5. SCHEDULE

Divisions, Flags, and Scheduled start times are as follows:

Division	Warning Signal	Start Time
D	Numeral Pennant '1'	1200
C	Numeral Pennant '2'	1230
B	Numeral Pennant '3'	1300
A	Numeral Pennant '4'	1330
Multi	Numeral Pennant '5'	1400

6. CHECK-IN

Check in will be via attendance at the Skippers meeting at SBYC at 0900.





SOCAL 300 SAILING INSTRUCTIONS

June 1-3, 2017

7. MARKS

Mark	Mark Description
Start	Marks "G" and "X" as white cylinders w/ yellow reflective markings
A	White cylinder buoy w/ yellow tetrahedron attached.
Gate 1	Santa Rosa Island to starboard, Santa Cruz Island to port (see SI section 8)
NOAA Weather Buoy	ODAS 46047 (see SI section 8)
SD	SD Approach Lighted Whistle Buoy ("SD", herein)
Finish	Between SD Channel markers "5" and "6"

8. THE COURSE – SEE ATTACHMENT B –

8.1. The SoCal 300 start will be in the vicinity of Point Castillo and Santa Barbara Yacht Club.

8.2. Leg 1: Santa Barbara to Score Gate 1

- o After the start, leave "Mark A" to port (approx. 34 23.229n / 119 43.167w)
- o Finish leg by passing between the two following scoring gate ends:
 - "Skunk Pt." (approx. 33 58.95n / 119 58.75w)
 - "Kinton Pt." (approx. 34 00.53n / 119 53.21w)

8.3. Leg 2: Score Gate 1 to Score Gate 2

- o Finish leg by passing between the two following scoring gate ends:
 - To port, NOAA Weather Buoy "ODAS 46047"
 - NOTE: 46047 swings in a radius approx. 0.6 nm around established mooring at approx. 32 23.90n / 119 29.90w.
 - To starboard, a point 5 nm at 180mag from ODAS 46047.

8.4. Leg 3: Score Gate 2 to San Diego

- o Leave Buoy "SD 1" to port (approx 32 37.33n / 117 14.75w)
- o Finish leg by passing between the two following scoring gate ends:
 - Buoy "SD 5" (approx 32 39.137n / 117 13.635w)
 - Buoy "SD 6" (approx 32 39.153n / 117 13.486w)

In the event a mark is missing or is not visible in the vicinity of the coordinates in this section, it will be the coordinates in this section which will be used for navigation/scoring purposes.





SOCAL 300 SAILING INSTRUCTIONS

June 1-3, 2017

9. AREAS OF POTENTIAL CONCERN

- 9.1. The RC strongly urges boats to consult the preamble to RRS Part 2 and all current applicable navigation charts, Local Notices to Mariners and Light Lists for Aids to Navigation to prudently navigate around and past the features of this course.
- 9.2. It is reported that the starting area Mark G is in 37' of water, and Mark X is in 52' of water. Please consult relevant navigational charts and boat instrumentation when navigating in the vicinity of the start area.
- 9.3. San Nicholas Island is a designated US Naval weapons testing range. There are no military activities scheduled for this area. As such, there are no exclusion zones in effect. However, sea state, coastal features and underwater obstructions should be taken into consideration for prudent navigation and safety of vessels in this area.
- 9.4. San Clemente Island is a designated US Naval weapons testing range. There are no exercises currently planned for the north, and northeast corners of the island. There are no exclusion zones on the southern end of the island. However, sea state, coastal features and underwater obstructions should be taken into consideration for prudent navigation and safety of vessels in this area.
- 9.5. The finish line (San Diego Channel markers "5" and "6") are due east of significant kelp growth. Please navigate responsibly when approaching the finish area.

10. THE START

- 10.1. The starting line will be between Mark G and Mark X, located outside the Santa Barbara Harbor breakwater. See Attachment A for coordinates and positioning. The Race Committee will be sighting the line from the clubhouse on shore.
- 10.2. The warning signal for each class shall be her class designator pennant as described in SI section 5, flown from the yardarm on the upper deck of Santa Barbara YC.
- 10.3. As a courtesy, the RC will attempt to hail any boat it identifies as OCS via VHF 69. Failure to make a hail or failure of communications equipment will not be grounds for redress. This changes RRS 62.1(a).

11. THE FINISH

- 11.1. A boat has finished when it passes between San Diego Channel buoy "5" and "6". Boats are required to document the time they pass through the finish per SI 15.1. Please email this documentation to email sailing@sdyc.org and sdycsailing@gmail.com per the instructions in the NOR.

12. WITHDRAWAL

- 12.1. A boat no longer racing shall notify the R/C via email (email sailing@sdyc.org and sdycsailing@gmail.com) of their intent as soon as they are no longer racing, or as soon as practical. Please include nature of withdraw, status of crew, destination and eta.
- 12.2. If an email is not possible, please notify the SDYC Sailing Office (619-758-6310) or the Security Gate (619-758-6322) at the earliest opportunity. Also please reference SI 4.2 for tracker return plans.





SOCAL 300

SAILING INSTRUCTIONS

June 1-3, 2017

13. PROTESTS AND REQUESTS FOR REDRESS

- 13.1. Protest forms will be available on the notice board at SDYC located on the east side (facing the water) of the Sailing Center and the online notice board at www.offshoreraceweek.com. Score inquires, protests and requests for redress shall be delivered in writing (or emailed via txt/photo of same) to the Sailing Center (email sailing@sdyc.org and sdycsailing@gmail.com) within the appropriate time limit.
- 13.2. Scoring Inquiries, Notices of protests and requests for redress filed will be posted and updated as quickly as possible to inform boats of hearings in which they are parties or named as witnesses. Hearings will be held in the Dockside room located on the first floor of the Sailing Center at SDYC, and may be heard as soon as the *parties* are available.
- 13.3. Notices of protest by the race committee or protest committee will be posted to inform boats under RRS 61.1(b).
- 13.4. The protest time limit for each boat is 4 hours after their finish. This changes RRS 61.3.
- 13.5. A request for reopening a hearing shall be delivered no later than 30 minutes after the party was informed of the decision. This changes RRS 66.

14. SCORING

- 14.1. Monohull and Multihull classes will be scored separately for all categories (class and overall) and by ratings established by their respective RAs.
- 14.2. Multihulls will be scored using the TCF numbers supplied by ORCA and will use the same TCF number for all legs.
- 14.3. Monohull boats will be scored using the TCF numbers derived from the California Offshore Wind Matrix, using the boats' valid 2017 ORR or ORR-EZ certificates.
- 14.4. A boat's scores in both fleet and overall for individual legs (leg 1 – 3) will be her position, based on corrected time figured using the time on time method, utilizing the TCF number for the boat.
- 14.5. A boat's score in both fleet and overall, for the entire course length (hereafter referred to as "Leg 4"), will be based on corrected time figured using the time on time method, utilizing the boat's TCF number.
- 14.6. A boat's score in both fleet and overall for the regatta will be the sum of her finish positions for legs 1, 2, and 3. Her finish place in leg 4 multiplied by 1.5 will be added to that sum.
- 14.7. A Boat's start time for a leg will be her finish time of the previous leg, except for Legs 1 and 4, which will be the start gun for the boat's class.

15. DOCUMENTATION

- 15.1. Boats are required to document the time they pass through a score gate or the finish with a legible photo or screen shot of boat navigation equipment showing Pacific Daylight Time, and current lat/lon of their vessel. Boats are encouraged to email leg finish times during the race to email sailing@sdyc.org and sdycsailing@gmail.com. Please be sure to include the Boat Name in the subject line of your email.





SOCAL 300 SAILING INSTRUCTIONS

June 1-3, 2017

- 15.2. All Boats are required to submit their finish times using the finish log sheet 'Attachment C' and the photos taken per SI 15.1 to the Sailing Office at San Diego Yacht Club within 2 hours of finishing the race, or email all items to sailing@sdyc.org and sdycsailing@gmail.com. Please be sure to include the Boat Name in the subject line of your email.
- 15.3. At the finish, if email or text is unavailable, please call the SDYC Sailing Office at 619-758-6310 and leave a voicemail with the following information: **caller name and phone number, boat name, sail number, finish time**. Remember to speak slowly and clearly and repeat your contact number. Boats failing to supply finishing times will be given interpolated times from the tracker, or may not be scored. Dropped calls, poor connections or wrong numbers may affect your finish time.
- 15.4. In the event of a discrepancy of a Boat's reported leg finish time, it will be up to the discretion of the Race Committee in conjunction with the Protest Committee (PC) to determine the finish time to be used. Evidence may be requested which may include but is not limited to; A boat's navigation software log file, testimony or evidence from other boats, race tracker or AIS logs, etc. This applies to any of the finishes at any scoring gate.
- 15.5. If a boat feels that any of her finish times, or any of the finish times of one of her competitors is incorrect, she may file a scoring inquiry with the Race Committee who will follow the guidelines of 15.4 in conjunction with the PC.
- 15.6. See SI 4.2 for instructions on returning your race supplied tracker.

16. PRIZES

- 16.1. The Offshore Race Week & SoCal 300 Awards ceremony day/time will be announced at the skippers meeting for the SoCal300 race, and will be based on the weather forecast and anticipated finish times.
- 16.2. Take home trophies will be awarded as described in the NOR.

17. DISCLAIMER

- 17.1. No claim is made or implied that observance of these safety requirements will prevent injury, death, or loss of property. Neither the establishment of these safety regulations, their use by race organizers, nor the inspection or absence of inspection of a boat for compliance with these safety regulations in any way limits or reduces the complete and unlimited responsibility of the person in charge, as per RRS 46, who shall ensure that the boat is seaworthy and manned by an experienced crew with sufficient ability and experience to face bad weather. S/he shall be satisfied as to the soundness of hull, spars, rigging, sails and all gear. S/he shall ensure that all safety equipment is at all times properly maintained and safely stowed and that the crew knows where it is kept and how it is to be used."

See USSER 1.2 and ORCA 5.6





SOCAL 300 SAILING INSTRUCTIONS

June 1-3, 2017

CONTACTS

Santa Barbara Yacht Club SoCal 300 Chairs
Bob Young
Santa Barbara Yacht Club
Junior Staff Commodore
bob@youngconst.com

Santa Barbara Yacht Club Race Director
Brad Schaupeter
racing@sbyc.org
(805) 965-8112 x114

San Diego Yacht Club SoCal 300 Chair
David Servais
david@sdboatworks.com
(360) 510-2984

Vessel Assist Catalina Island/ Boat US
Avalon, CA
24-hour Contact: 310-510-1675

San Diego Yacht Club Sailing Office
Jeff Johnson
sailing@sdyc.org
(619) 758-6310

San Diego Yacht Club Regatta Admin
Jared Wohlgemuth
jared@sdyc.org
(619) 758-6309

San Diego Yacht Club Dockmaster
Ty Olsen
ty@sdyc.org
(619) 758-6308

U.S Coast Guard Rescue Coordination Center
VHF 16
24-hour Emergency Contact: 510-437-3700





SOCAL 300 SAILING INSTRUCTIONS

June 1-3, 2017

Attachment A - SoCal 300 Start Area



Start Area Marks

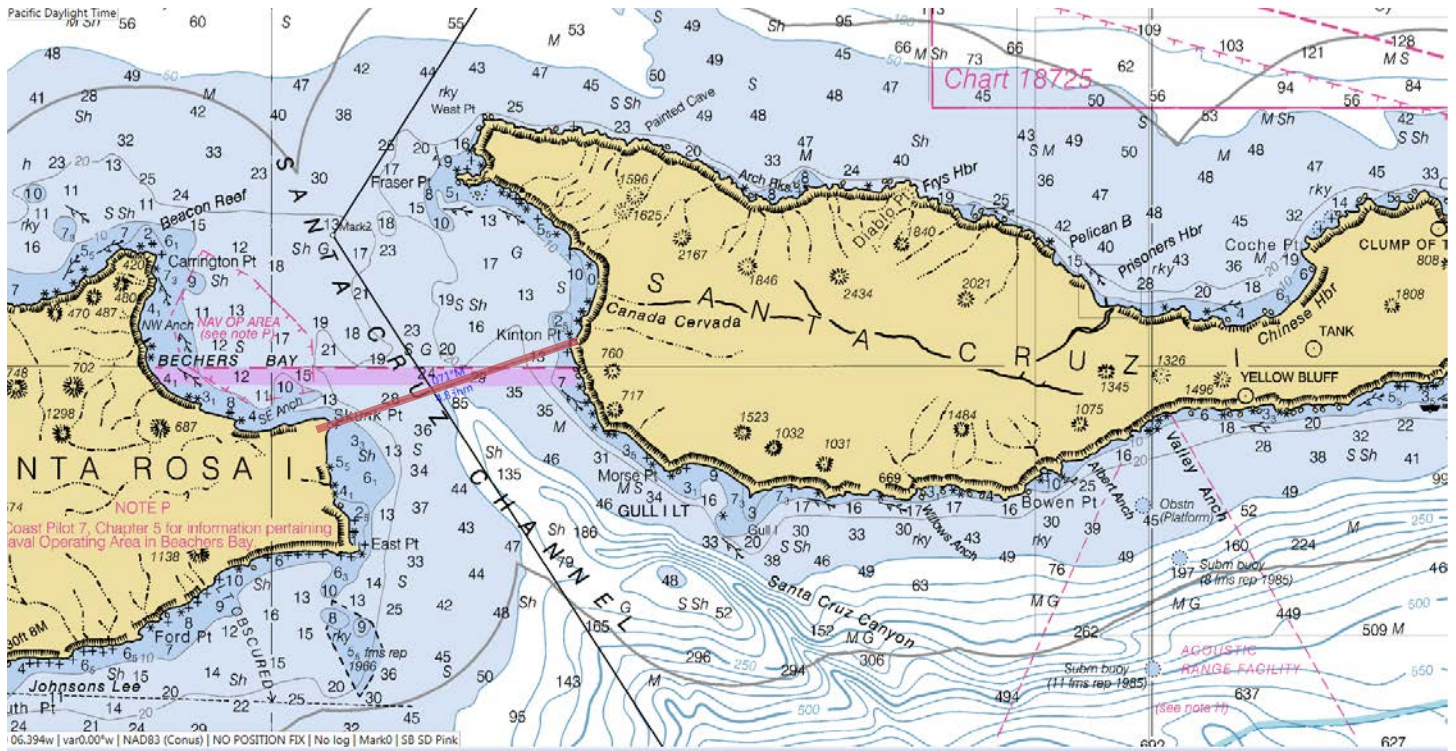
G: N34 24.023 W119 41.442
X: N34 23.765 W119 41.270
A: N34 23.229 W119 43.167



SOCAL 300 SAILING INSTRUCTIONS

June 1-3, 2017

Attachment B – Score Gate 1

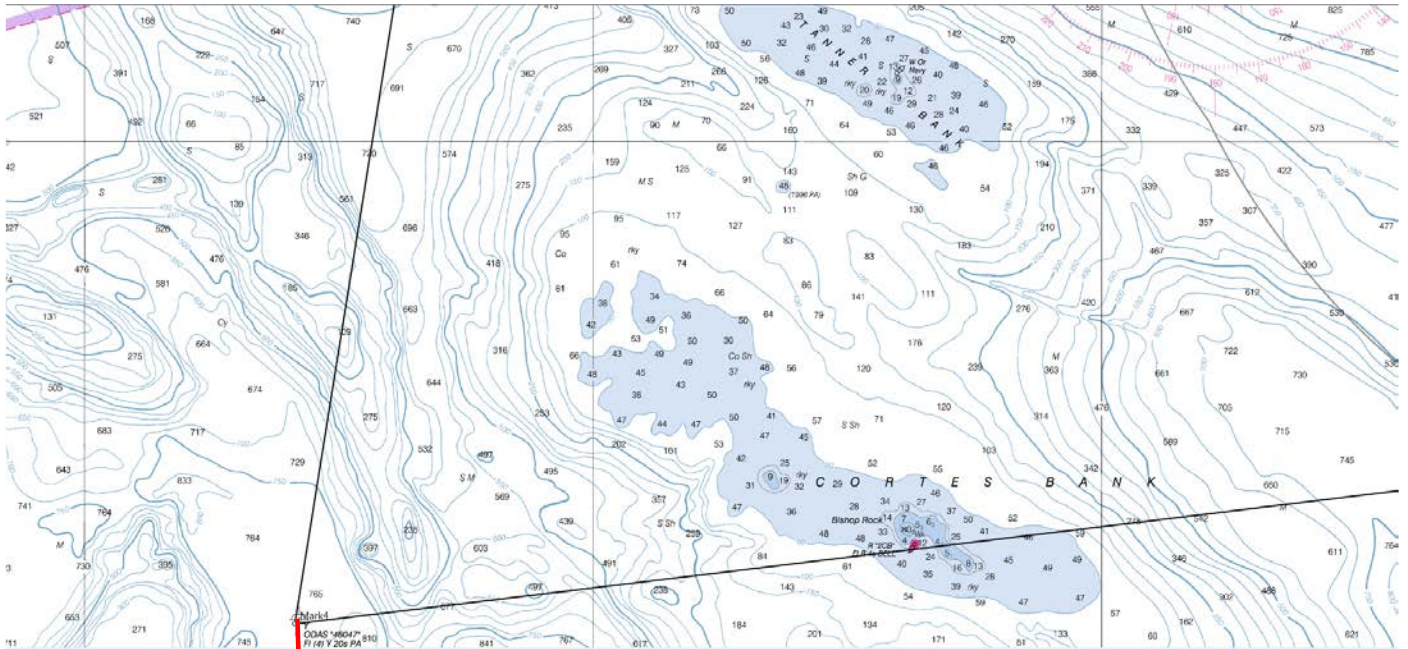




SOCAL 300 SAILING INSTRUCTIONS

June 1-3, 2017

Attachment B – Score Gate 2

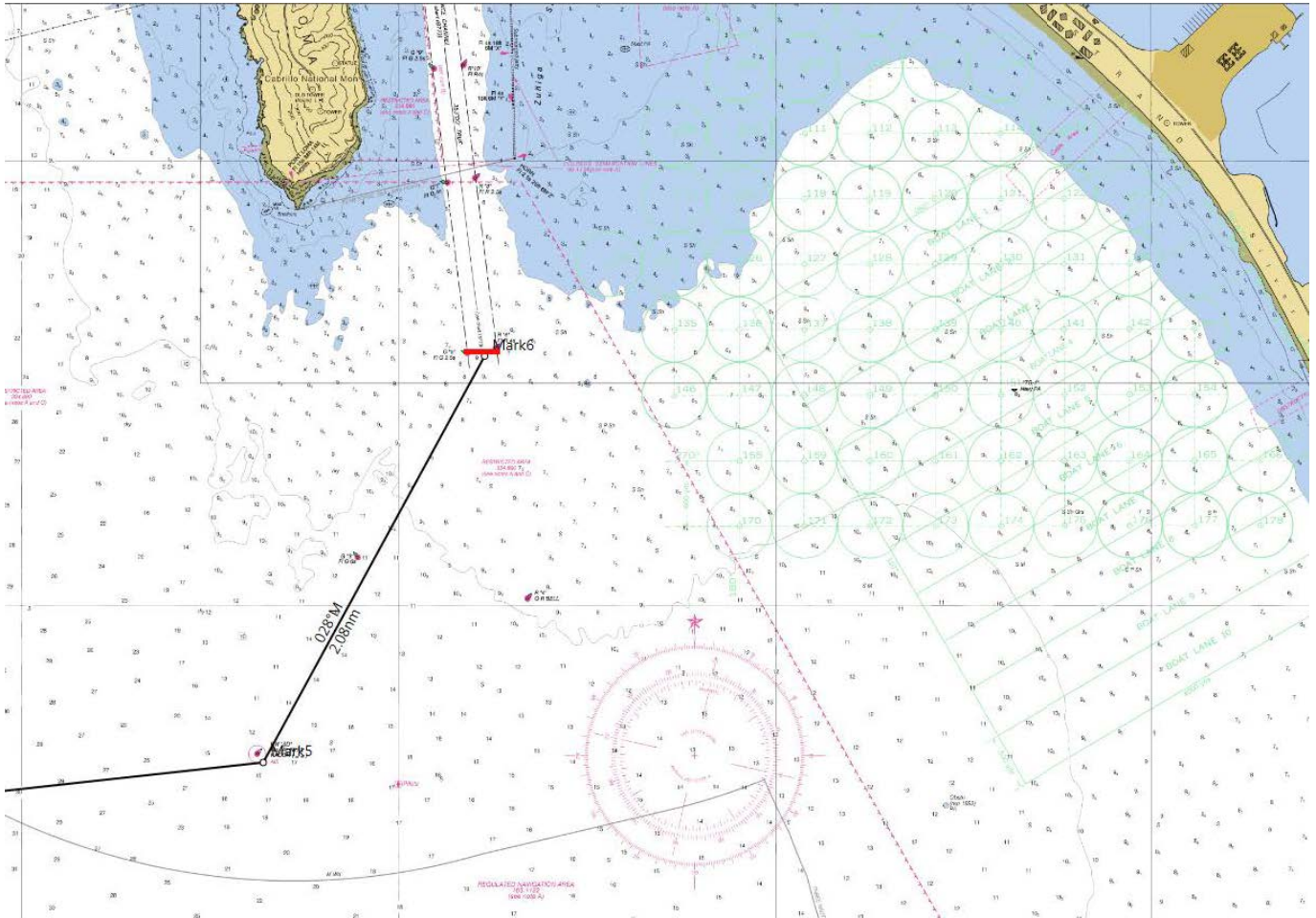




SOCAL 300 SAILING INSTRUCTIONS

June 1-3, 2017

Attachment B – Finish





SOCAL 300
SAILING INSTRUCTIONS
 June 1-3, 2017

Attachment C - Finish Log			
Yacht Name:	Sail Number:	Division:	ORR Rate #
Leg:	Gate Crossing Time:	Latitude:	Longitude:
Scoring Gate 1 Crossing (Skunk Pt and Kinton Pt)			
	Notes:		
Scoring Gate 2 Rounding (Weather Buoy ODAS 46047)			
	Notes:		
Scoring Gate 3 Crossing (San Diego Bay SD5 & 6)			
	Notes:		